

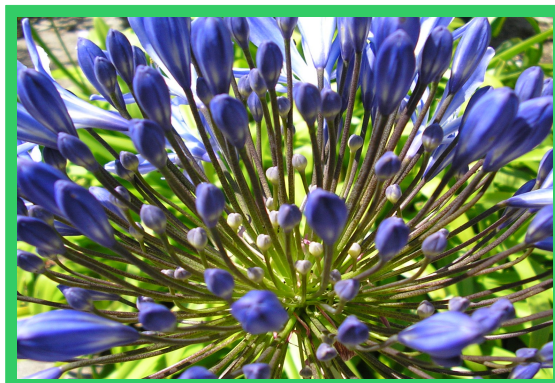
St Just in Bloom



2009

Contents

Page 1- Contents & Introduction to St Just
Page 2-5 Improvement Projects
Page 6- Public Planting
Page 7-8 St Just Schools in Bloom
Page 9- Baskets, Planters & Window Boxes
Page 10- Private Gardens
Page 11- Sustainability
Page 12- Recycling
Page 13- Green Waste
Page 14- Essential Support
Page 15- Lafrowda Day
Page 16- St Just's Heritage
Page 17-18 Presentation & Awards
Page 19- Japanese Knotweed
Page 20- St Just in Bloom website
Other Information



Introduction to St. Just

The town of St Just is full of Cornish Character, Market Square is surrounded by granite houses and overlooked by the church tower. At the heart of the town and just behind the Town clock and memorial lies a grass covered amphitheatre known as the 'Plen and Gwarry'. The name in English means 'playing place' and the site has been used as a place to perform plays for centuries, this tradition still continues today.

St Just expanded substantially during the heyday of Victorian mining when the great coastal mines of West Cornwall made St Just's name famous. The last working tin mine nearby at Geevor, Pendeen ceased production in 1990. The mining days of St Just may be over, but the town survives today as the heart of a busy and welcoming community.

In 2003 Penwith District Council achieved seven awards for Britain in Bloom in neighbouring towns and villages and St Just was conspicuous in its absence. A St Just in Bloom committee was formed to push forward St Just's first ever foray into the competition and was busy making plans to put England's most westerly town on the floral map.

The first St Just in Bloom meeting was held at St Just Comprehensive School on 18 November 2003. St Just's Primary and Secondary Schools joined the scheme and play a key role in the town's involvement in the Britain in Bloom competition as they grow and propagate plants and flowers.



Improvement Projects

Granite seating

10 Granite Seats have been sited on the Coast around the St Just area by the Council with permission from the National Trust.

The Granite seats were purchased using Liveability funding.

The seats have been positioned in order to take full advantage of the beautiful views and the surrounding countryside.

Outdoor Exercise Equipment

A demonstration of Outdoor Exercise Equipment took place at St Just on Monday 29 September 2008. the demonstration was carried out by the Great Outdoor Gym Company and organised by Penwith District Council.

The demonstration gave residents of St Just both young and old the opportunity to try out the equipment for themselves. The demonstration proved very successful, therefore three pieces of exercise equipment were purchased using Liveability funding.

The three pieces of exercise equipment have been recently sited at St Just Playsite.

Outdoor Exercise Equipment is very similar to equipment that would be found in a fitness gym. However, the pieces of equipment are made to withstand the great outdoors. All of the equipment meets European Safety Standards and can be enjoyed by the whole family from children to grandparents.



Fitness for all Demonstration- September 2008

Drill Hall- Community Garden

A disused area by the Drill Hall in St Just is being transformed into a Community Garden for all to enjoy, the site is currently being cleared. Once completed there will be a seating area within the garden for both local residents and tourists visiting the area to enjoy.

St Just Playsite and Skate Park



The park has been developed to provide for families living nearby, it has good playground facilities meeting full European regulations. The equipment in the playsite is suitable for children aged 2 – 19 years.

The playsite possesses wetpour surfacing made from recycled lorry tyres, grassed areas with seats a football pitch, a skatepark and a basketball and football practice wall.

St Just Playsite is used all year round by both local children and those on holiday in the surrounding area. The play area provides great choice and amusement for children of all ages.



St. Just's Underground Wirescape

Major works to install a completely new underground electrical system in Market and Bank Squares began in St Just in February 2005.

The works included trenching for burial of electric cables and other services, road re-surfacing, laying new pavements with granite sourced from Cornish quarries and installing new lighting.

Cormac and Western Power worked to make the transformation run with minimal disruption to residents and visitors. The removal of the cables from the two squares allows the quality of the squares and their buildings to be more obvious and appreciated architecturally.



Above: Before the wiring was sited underground



Above: Bank Square after the cables were removed and located underground

Lafrowda Regeneration Project

The free Lafrowda car park in St Just has been resurfaced and transformed by the creation of Cornish hedge style walls, a handsome new bus shelter, areas of formal granite paving and new seating and garden area at the British legion. New lamp posts have been erected and CCTV cameras installed to improve safety in the area and the St Just in Bloom Group have further enhanced the Cornish stone walls by planting them with a lovely mix of flowers and shrubs. Trees have been planted around the car park and the bus turning point and the waiting area will be able to accommodate coaches.



Above: Sustainable bed and seating area in the Lafrowda Car Park



Above: A range of planting used in the surrounding areas of the free Lafrowda Car Park

Public Planting

A range of planting throughout St Just



Tubs at The Turnpike Estate



Planting at St Just Primary School



Three-tier planter in Bank Square



Bench planters



Planted tub in Market Square

St Just Schools in Bloom

Cape Cornwall Secondary School students have been growing their own bedding plants with the help of Alec Hogg. These plants are then used to brighten up St Just and the outside of the School.



Flower bed outside Cape Cornwall School



Cape Cornwall School Garden

Pupils at St Just Primary School have been growing their own vegetables at School, these vegetables are then used in the School canteen.



A scarecrow guarding the vegetables



Children helping in the Garden

Pupils at the Nurseries have also contributed towards St Just in Bloom by starting planting campaigns and brightening up the areas outside their Nursery.



Plants and vegetables at the School

St Just Primary School Flower Bed Scheme



The above picture was taken just after the new bed had been planted



Pictures of the same bed as above but three years later

Baskets, Planters and Window Boxes



Townfolk are encouraged to decorate their windows in a floral way. Many participate and take full advantage of the hanging baskets and window box scheme run by Cornwall Council where residents and businesses can purchase baskets and window boxes. The hanging baskets use a water holding system – the containers have a reservoir in the base, which reduces the need for watering and also the use of sphagnum moss.



Private Gardens

Many roads and terraces have lovely gardens and the residents take great pride. This makes St Just a very attractive place to live and brings the community together to talk about their gardens and exchange gardening tips.



A gardening competition takes place in St Just each year, all residents and businesses have the opportunity to enter. Judging is carried out by members of the St Just in Bloom Group and Cornwall Council.



Sustainability

Sustainable Action within the Council covers the areas of managing and improving the Council's own environmental performance and integrating sustainable development aims into the Council's policies and activities.

Our **Sustainability Policy** builds on the findings of our community plan and states what the Council's beliefs, aims, and future actions will be with regard to sustainable development.

The Council is also concerned about the regional and global implications of increased greenhouse gas concentrations in the atmosphere. In order to mitigate the effects of global warming and to help the County best prepare for changes in our weather patterns, we are currently starting to collate information in order to prepare a climate change strategy.



Healthy Eating Initiative in the Community – Sustainability in the Farming Community



Boxes full of tasty fruit and vegetables are helping local people eat more healthily while aiding local farmers and growers to plan and market their produce more successfully locally. Known as the 'Healthy Boxes Initiative' the scheme is strongly backed by Cornwall Council, the town and parish councils and various other local organisations. The Healthy Boxes project has won Gold in the Green Apple Awards which is run by the Green Organisation which is dedicated to recognising, rewarding and promoting environmental best practice throughout the world.

All produce in the boxes is locally grown and the scheme aims to encourage the eating of fruit and vegetables by making them easily accessible to all families and now the scheme is currently supplying in the region of 500 boxes a week.

As well as encouraging healthy eating, a primary purpose was to support local vegetable growers, an important aspect of Cornwall Council's long-term vision of supporting the County's key industries and making them more sustainable. The scheme has provided a valuable new market for many smaller farmers who do not have the scale or the ability to supply the multiple retailers.



Sustainable plants are used to an advantage as many easy care plants with a sub tropical theme thrive in Cornwall's climate

Recycling

In 2003 the Council introduced household recycling where glass, paper, cans, textiles, were collected from the kerbside in a free recycled plastic 55-litre box with a lid. Plastics, textiles and books can be taken to the Recycling Centre situated in the town.

There are a combination of Recycling Banks throughout the district, including mini recycling centres in predominantly rural areas, supermarket points and voluntary group collections alongside a multi-material kerbside recycling scheme and the green waste kerbside collection scheme. Both these schemes were introduced and funded wholly by Penwith Council. As well as this Cornwall Council also recycles beach cleaning waste.

A Youth Centre at the Nancherrow Centre has been extensively renovated and the children and youths have been involved from the beginning to say what they wanted and how they wanted it decorated. Workshops are held regularly and the sculptures for Lafrowda Day were constructed with local artists and school children.



Above: Recycling area for local residents and sculptures outside the Nancherrow Centre.

Bulky Waste and Furniture Re-Use Projects

The Council operates a bulky waste collection service and for £15 will arrange to collect up to 3 items from the kerbside. For items that can be re-used eg. working electrical appliances (fridges, cookers), soft furnishings in good condition and less than 12 years old, hard items which are not too big and in good condition (wardrobes, chests of drawers), people can contact the GOFA Project who will arrange to collect and donate to people on benefits or low incomes.

Holiday Cottages are targeted for Recycling

Leaflets have been delivered targeting holidaymakers in St Just's self catering cottages telling them where and how to recycle their rubbish while on holiday.



Green Waste

Over the last few years over 90% of Green Waste produced throughout the district has been recycled. Leaves collected from the roads during the Autumn are taken to the Recycling Farm at Splattenridden. The Council were reimbursed over £23,000 which was put towards the purchase of a new street cleansing vehicle. Splattenridden Farm was granted £160,000 from 'European Objective One' to purchase equipment for converting green and wood waste into a quality compost to fertilise farm land. The project provides substantial local environmental benefits by reducing the amount of green and wood waste entering Cornish landfill sites by more than 15,000 tonnes in the next 4 years.



Green waste recycling has been boosted by the work of a giant shredding machine that munches its way through garden and woodland cuttings to produce useful compost. Kerb-side collections of green waste are taken to Downs Farm, where the waste is loaded into the high capacity shredder. The compost that emerges is formed into open rows which are turned regularly as part of the process. Downs Farm recently received full accreditation from the Composting Association and it is hoped that the compost can be packaged and sold locally. This scheme is contributing to the Council achieving its recycling targets and also benefits the environment.



Essential Support

Underpinning the attractiveness of St Just's open spaces is the support of Cornwall Council's dedicated team of workers.

Street Cleansing

Litter is an important issue for local people and also for the large numbers of tourists who visit St Just each year. Much co-operation is given by the residents who report problems and regularly inspect to ensure good cleanliness standards are maintained. The Street Cleansing team follow a programme of scheduled routes designed to keep the area free of litter and debris.

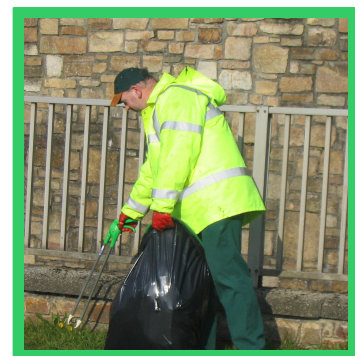


Dog and Litter Awareness

To raise awareness of the importance of a safe, clean, quality environment for all to enjoy, Cornwall Council has a dog awareness campaign. A new Environmental Enforcement Partnership with various organisations was formed to spread the message of **'pick up or pay up'** to people who indiscriminately drop litter, or allow their dogs to foul public areas and leave it behind. The campaign involves a partnership between the Dog Watch Scheme, The Civic Society, Cornwall Council and Police Community Support Officers. The scheme aims to promote responsible waste disposal among dog owners and the public through education and enforcement.

In line with the Council's commitment to a Zero Tolerance Policy towards repeat offenders, Police Community Support Officers are also authorised to issue fixed penalty notices where a failure to comply with legal notices has been observed.

The Dog Enforcement Section at the local council are now using Covert Surveillance/hidden cameras in dog bins to film people who let their dog foul and do not pick it up. This has led to prosecutions in the last year.



Fly Tipping

Although the Council runs a bulky waste collection service and provides a Recycling Centre nearby with skips at designated sites, fly tipping does sometimes occur. All fly tipping is recorded and collated monthly to submit to the Environmental Agency who have set up a national database recording system known as 'Flycapture'. It is the Council's aim to collect all fly tipping within 1 day of it being reported

Lafrowda Day



The Lafrowda Festival is an annual event in St. Just in Penwith, Cornwall, in celebration of community arts.

The Plen an Gwary (or playing place) is an open air amphitheatre, and plays an integral part in the festivities and celebrations during the Lafrowda Festival. All kinds of bands and musicians join in the celebrations, and there are many street entertainers performing throughout the day and well into the early hours.

Lafrowda is a festival to show off the artistic and creative talents run through workshops with artists and school children, and enjoyed not only by the locals, but the many tourists who once they have been and enjoyed, return again year after year.



St Just's Heritage

Historic Mining Landscapes in Line for World Heritage Site Status

Penwith's historic mining areas may soon gain World Heritage Site (WHS) status if the United Nations Educational and Cultural Organisation (UNESCO) approves.

Areas within Penwith currently under consideration as part of the British government's WHS bid for a Cornwall and West Devon Mining Landscape region, include the St Just Mining District, the port of Hayle and the Tregonning and Gwinear Mining District (shared with Kerrier District).

UNESCO will be considering the bid during 2005 and confidence in a positive result is high.

Recognition as a World Heritage Site will bring immense benefits to Penwith. It will ensure continuing good management of the district's historic mining assets, and will attract funds for economic regeneration and for continuing environmental enhancement of former mining areas.

Achieving WHS status will also increase the national and international profile of the area

and it will boost sustainable heritage tourism.

The WHS Bid is being delivered by Cornwall County Council's Historic Environment Service and is being paid for by Objective One, South West Regional Development Agency, Cornwall and Devon County Councils, seven District Councils including Penwith, The National Trust and the Tamar Area of Outstanding Natural Beauty.

Documents in support of the bid can be viewed on the web site www.cornish-mining.org.uk and can also be seen at local libraries and Council Offices. ♦

Wheal Edward and West Wheal Owles mine stacks at Botallack, near St Just.



To reflect St Just's Heritage floral mines have been erected around the town, there is one sited at the entrance to St Just.

Presentation and Awards St Just in Bloom

South West In Bloom Awards 2008



Members of the St Just in Bloom Group and the Mayor of St Just attended the South West in Bloom Awards at The Guildhall, Plymouth in September 2008.



St Just were awarded a Silver Gilt and the South West in Bloom Youth Award for the contribution by the schools and nurseries in the town.

Presentation Evening 2008

West Cornwall in Bloom Awards Evening at Tregenna Castle Hotel



The Mayor of St Just attended the Awards Evening and was presented with the certificate and Youth Award cup for St Just by Councillor Joan Tanner.



Monty Nicholls the Mayor of St Just and Hannah McFadden collect the Silver Gilt Award for St Just in Bloom.

Japanese Knotweed

Japanese Knotweed was first introduced to Britain in the 1840's. It was brought into the country by the Victorians for its use as an ornamental plant. It is now the UK's most invasive plant and causes many problems to both surrounding plants and nearby habitats. Japanese Knotweed has developed the ability to grow in any soil no matter how poor and it can even grow through concrete, this means that it is extremely hard to control.

Tregeseal Knotweed Project

The eradication of Japanese Knotweed in Kenidjack and Tregeseal Valley began in 2006. Since the start of this project a number of groups and organisations have worked together in order to remove the plant from these areas. These organisations are the National Trust, Penwith District Council, Cornwall County Council, Defra, English Nature, The Environment Agency, St Just Town Council and South West Water. These groups also work alongside local landowners so as to prevent the spread of Japanese Knotweed to neighbouring fields and farmland.

There are watercourses that spread throughout the valleys and this has had an effect on the treatment methods. There are a number of treatments that can be used on the plant.

An area at Cot Valley which is also in the St Just area has had problems with Japanese Knotweed. The National Trust used a stem filling technique for the removal of the plant in this area. This technique is carried out by cutting the plant stem and injecting Round Up into the stem. This method prevents surrounding vegetation and plants from being harmed as you can easily target the Knotweed that you are trying to eradicate. Spraying of the plant is also often used in areas away from watercourses or any other surrounding plants.

The main aim of the Tregeseal Knotweed Project is to protect the native plants and the ecosystems within the Tregeseal and Kenidjack Areas.



Eradication of Japanese Knotweed



Japanese Knotweed Plant

St Just in Bloom Website



St Just in Bloom now have there own website the address is www.stjustinbloom.org.uk

