

St. Just



In Bloom 2008



Contents

Page 1- Contents & Introduction to St. Just
Page 2- 5 Improvement Projects
Page 6-7 St. Just Schools In Bloom
Page 8- Baskets, Planters & Window Boxes
Page 9- Private Gardens
Page 10- Sustainability
Page 11- Recycling
Page 12- Green Waste
Page 13-14 Essential Support
Page 15- St. Just's Heritage
Page 16- Lafrowda Day
Page 17- Work Programme
Page 18-19 Presentation & Awards
Page 20- Japanese Knotweed
Page 21- Community Involvement
Page 22- 23 Recycling In St. Just

Introduction to St. Just

St Just is a handsome town of great Cornish character. Sturdy granite houses surround the busy Market Square, which is discreetly overlooked by the elegant tower of the parish church.

At the heart of the town and just behind the town clock and memorial, lies a grass-covered amphitheatre known as the 'Plen an Gwary'. The name in English means 'playing place' and the site was used for performing medieval plays until the early 17th Century.

There was a settlement at St Just from the earliest times but the town expanded substantially during the heyday of Victorian mining when the great coastal mines of West Cornwall made St Just's name famous, and when the town's population increased rapidly. The last working tin mine nearby at Geevor, Pendeen ceased production in 1990. The mining days of St Just may be over, but the town survives today as the heart of a busy and welcoming community.

In 2003 Penwith District Council achieved a magnificent seven awards for Britain in Bloom in neighbouring towns and villages and St Just was conspicuous in its absence. A St Just in Bloom Committee was formed to push forward St Just's first ever foray into the competition and was busy making plans to put England's most westerly town on the floral map.

The first meeting was held at St Just Comprehensive School on 18th November 2003. St Just's Primary and Secondary Schools joined the scheme and play a key role in the town's involvement in the Britain in Bloom competition as they grow and propagate plants and flowers.



Improvement Projects



In February 2004 work began on the £3.9 million St Just Heritage Area Regeneration Project. Project Manager Nigel Sumpter from Cornwall County, Mike Early from Pendeen Residents Group, Philip Wilkins from the St Just Working Group, Town Mayor Monty Nicholls and County Councillor Rachel Ewer gathered in the car park with digging tools to signify that the start of work on the long awaited project is now imminent.



Much has been done in the last 3 years to improve the neglected areas around the town. Hundreds of spring bulbs have been donated by a large national bulb company and B&Q. Volunteers from the St Just in Bloom Committee have turned out in all weathers to plant the bulbs which give a wonderful vibrant splash of colour to brighten dull days.

Granite hedging and Seating areas

There have been various other projects that have been carried out in St. Just over the past few years. Traditional stone seating and granite hedges have been built in various areas throughout the town. These seating areas now provide the residents with a place to sit and relax all year round.



St. Just Playsite and Skate Park



This park has been developed to provide for young families living nearby with:

- Good playground facilities meeting full European regulations. Suitable for all aged 2-19 years.
- Wetpour surfacing made from recycled lorry tyres.
- Grassed areas with seats.
- Football pitch.
- Skatepark.
- Basketball and football practice wall.



St Just Playsite is used all year round by both local children and those on holiday in the surrounding area. The play area provides great choice and amusement for children of all ages.

St. Just's Underground Wirescape

Major works to install a completely new underground electrical system in Market and Bank Squares began in St Just in February 2005. The works included trenching for burial of electric cables and other services, road re-surfacing, laying new pavements with granite sourced from Cornish quarries and installing new lighting.

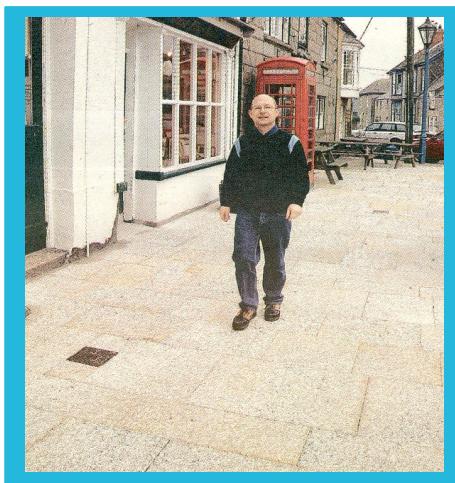


Cormac and Western Power worked to make the transformation run with minimal disruption to residents and visitors. The removal of the cables from the two squares allows the quality of the squares and their buildings to be more obvious and appreciated architecturally.

Above: Before the wiring was sited underground



Above: Bank Square after the cables were removed and located underground



St. Just regeneration continues with new paving using Cornish Granite.

Lafrowda Regeneration Project

The free Lafrowda car park in St Just has been resurfaced and transformed by the creation of Cornish hedge style walls, a handsome new bus shelter, areas of formal granite paving and new seating and garden area at the British legion. New lamp posts have been erected and CCTV cameras installed to improve safety in the area and the St Just in Bloom have further enhanced the Cornish stone walls by planting them with a lovely mix of flowers and shrubs. Trees have been planted around the car park and the bus turning point and the waiting area will be able to accommodate coaches.



Sustainable bed- Part of the Lafrowda Regeneration Scheme

Public Planting

A range of planting throughout St. Just



St. Just Schools in Bloom



Above: Cape Cornwall School Garden

Cape Cornwall School Students have been growing their own bedding plants with the help of Alec Hogg. These plants are being used to brighten up St. Just and the outside of the school. The Primary School are also working hard as well as the Pre-School children who have started planting campaigns and flower themed painting competitions.



Cape Cornwall School Planting



Sustainable Bed Cape Cornwall School



Flower Bed Outside the School



Nursery In Bloom Pictures

St. Just Primary School Flower Bed Scheme



New flower bed- Top of Bosorne Road



Same bed as above as above but two years later

Baskets, Planters and Window Boxes



Hanging Baskets

Townfolk are encouraged to decorate their windows in a floral way. Many participate and take full advantage of the hanging baskets and window box scheme run by Penwith Council where residents and businesses can purchase baskets and window boxes. The hanging baskets use a water holding system – the containers have a reservoir in the base, which reduces the need for watering and also the use of sphagnum moss.



Private Gardens

Many roads and terraces have lovely gardens and the residents take great pride. This makes St Just a very attractive place to live and brings the community together to talk about their gardens and exchange gardening tips.



Sustainability

Sustainable Action within the Council covers the areas of managing and improving the Council's own environmental performance and integrating sustainable development aims into the Council's policies and activities.

Our **Sustainability Policy** builds on the findings of our community plan and states what the Council's beliefs, aims, and future actions will be with regard to sustainable development.

The Council is also concerned about the regional and global implications of increased greenhouse gas concentrations in the atmosphere. In order to mitigate the effects of global warming and to help the district best prepare for changes in our weather patterns, we are currently starting to collate information in order to prepare a climate change strategy.



Healthy Eating Initiative in the Community – Sustainability in the Farming Community



Boxes full of tasty fruit and vegetables are helping local people eat more healthily while aiding local farmers and growers to plan and market their produce more successfully locally. Known as the 'Healthy Boxes Initiative' the scheme is strongly backed by Penwith Council, the town and parish councils and various other local organisations. The Healthy Boxes project has won Gold in the District Council's category of the Green Apple Awards which is run by the Green Organisation which is dedicated to recognising, rewarding and promoting environmental best practice throughout the world.

All produce in the boxes is locally grown and the scheme aims to encourage the eating of fruit and vegetables by making them easily accessible to all families and now the scheme is currently supplying in the region of 500 boxes a week.

As well as encouraging healthy eating, a primary purpose was to support local vegetable growers, an important aspect of Penwith Council's long-term vision of supporting the district's key industries and making them more sustainable. Penwith's Chief Executive, Jim McKenna said "it's an excellent opportunity to enhance the amount paid at the farm gate and to sustain existing farm businesses. Without farmers and farming Penwith would not be the place it is." The scheme has provided a valuable new market for many smaller farmers who do not have the scale or the ability to supply the multiple retailers.



Sustainable Plants are used to an advantage as many easy care plants with a sub tropical theme will thrive in Cornwall's climate.

Recycling

In 2003 Penwith Council introduced household recycling where glass, paper, cans, textiles, were collected from the kerbside in a free recycled plastic 55-litre box with a lid. Plastics, textiles and books can be taken to the Recycling Centres situated around the town.



Penwith Council is one of the few councils that recycles beach cleaning waste. This figure was achieved by a combination of Recycling Banks throughout the district, including mini recycling centres in predominantly rural areas, supermarket points and voluntary group collections alongside a multi-material kerbside recycling scheme and the green waste kerbside collection scheme. Both these schemes were introduced and funded wholly by Penwith Council.

A Youth Centre at the Nancherrow Centre has been extensively renovated and the children and youths have been involved from the beginning to say what they wanted and how they wanted it decorated. Workshops are held regularly and the sculptures for Lafrowda Day were constructed with local artists and school children.



Above: Recycling area for local residents and sculptures outside the Nancherrow Centre.

Bulky Waste and Furniture Re-Use Projects

The Council operates a bulky waste collection service and for £15 will arrange to collect up to 3 items from the kerbside. For items that can be re-used eg. working electrical appliances (fridges, cookers), soft furnishings in good condition and less than 12 years old, hard items which are not too big and in good condition (wardrobes, chests of drawers), people can contact the GOFA Project who will arrange to collect and donate to people on benefits or low incomes.

Holiday Cottages are targeted for Recycling

Leaflets have been delivered targeting holidaymakers in St Just's self catering cottages telling them where and how to recycle their rubbish while on holiday.



Green Waste

Over the last few years over 90% of Green Waste produced throughout the district has been recycled. Leaves collected from the roads during the Autumn are taken to the Recycling Farm at Splattenriden. The Council were reimbursed over £23,000 which was put towards the purchase of a new street cleansing vehicle. Splattenriden Farm was granted £160,000 from 'European Objective One' to purchase equipment for converting green and wood waste into a quality compost to fertilise farm land. The project provides substantial local environmental benefits by reducing the amount of green and wood waste entering Cornish landfill sites by more than 15,000 tonnes in the next 4 years.



Green waste recycling has been boosted by the work of a giant shredding machine that munches its way through garden and woodland cuttings to produce useful compost. Kerb-side collections of green waste are taken to Downs Farm, where the waste is loaded into the high capacity shredder.

The compost that emerges is formed into open rows which are turned regularly as part of the process. Downs Farm recently received full accreditation from the Composting Association and it is hoped that the compost can be packaged and sold locally. This scheme is contributing to Penwith Council achieving its recycling targets and also benefits the environment.

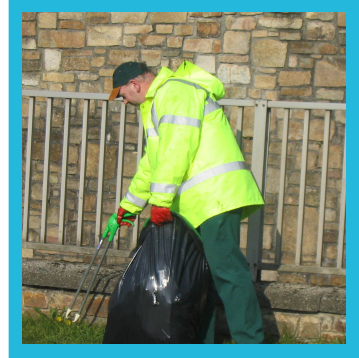


Essential Support

Underpinning the attractiveness of St Just's open spaces is the support of Penwith District Council dedicated team of workers.

Street Cleansing

Litter is an important issue for local people and also for the large numbers of tourists who visit St Just each year. Much co-operation is given by the residents who report problems and regularly inspect to ensure good cleanliness standards are maintained. The Street Cleansing team follow a programme of scheduled routes designed to keep the area free of litter and debris.



Dog and Litter Awareness

To raise awareness of the importance of a safe, clean, quality environment for all to enjoy, Penwith Council has a dog awareness campaign. A new Environmental Enforcement Partnership with various organisations was formed to spread the message of '**pick up or pay up**' to people who indiscriminately drop litter, or allow their dogs to foul public areas and leave it behind. The campaign is being sponsored by a local business, William Rogers Insurance and involves a partnership between the newly formed Dog Watch Scheme, The Civic Society, Penwith Council and Police Community Support Officers. The scheme aims to promote responsible waste disposal among dog owners and the public through education and enforcement.

In line with the Council's commitment to a Zero Tolerance Policy towards repeat offenders, Police Community Support Officers are also authorised to issue fixed penalty notices where a failure to comply with legal notices has been observed.

The Dog Enforcement Section at the local council are now using Covert Surveillance/ hidden cameras in dog bins to film people who let their dog foul and do not pick it up. This has led to prosecutions in the last year.

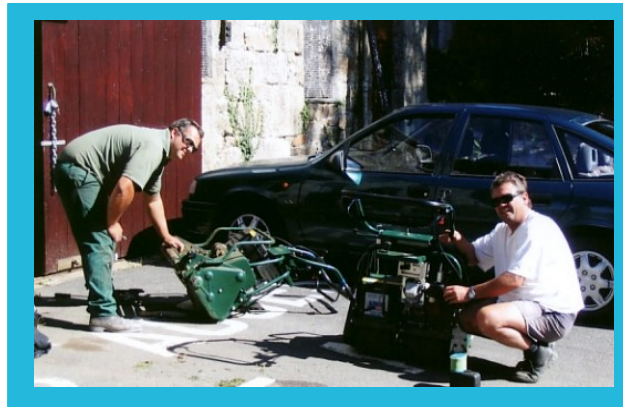


Fly Tipping

Although the Council runs a bulky waste collection service and provides a Recycling Centre nearby with skips at designated sites, fly tipping does sometimes occur. All fly tipping is recorded and collated monthly to submit to the Environmental Agency who have set up a national database recording system known as 'Flycapture'. It is the Council's aim to collect all fly tipping within 1 day of it being reported



Penwith District Council- Open Spaces Team



St. Just's Heritage

Historic Mining Landscapes in Line for World Heritage Site Status

Penwith's historic mining areas may soon gain World Heritage Site (WHS) status if the United Nations Educational and Cultural Organisation (UNESCO) approves.

Areas within Penwith currently under consideration as part of the British government's WHS bid for a Cornwall and West Devon Mining Landscape region, include the St Just Mining District, the port of Hayle and the Tregonning and Gwinear Mining District (shared with Kerrier District).

UNESCO will be considering the bid during 2005 and confidence in a positive result is high.

Recognition as a World Heritage Site will bring immense benefits to Penwith. It will ensure continuing good management of the district's historic mining assets, and will attract funds for economic regeneration and for continuing environmental enhancement of former mining areas.

Achieving WHS status will also increase the national and international profile of the area

and it will boost sustainable heritage tourism.

The WHS Bid is being delivered by Cornwall County Council's Historic Environment Service and is being paid for by Objective One, South West Regional Development Agency, Cornwall and Devon County Councils, seven District Councils including Penwith, The National Trust and the Tamar Area of Outstanding Natural Beauty.

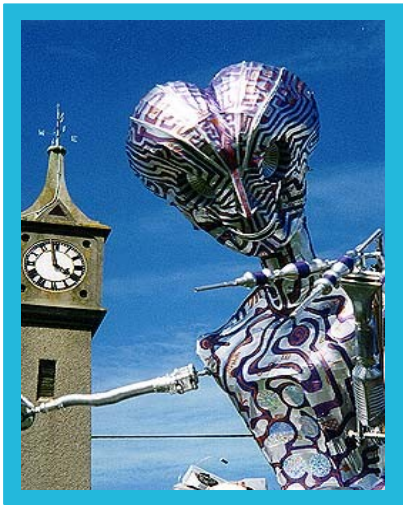
Documents in support of the bid can be viewed on the web site www.cornish-mining.org.uk and can also be seen at local libraries and Council Offices. ♦

Wheal Edward and West Wheal Owles mine stacks at Botallack, near St Just.



To reflect St. Just's Heritage floral mines have been erected around the town there is one situated at the entrance to St. Just.

Lafrowda Day



The Lafrowda Festival is an annual event in St. Just in Penwith, Cornwall, in celebration of community arts.

The Plen an Gwary (or playing place) is an open air ampitheatre, and plays an integral part in the festivities and celebrations during the Lafrowda Festival. All kinds of bands and musicians join in the celebrations, and there are many street entertainers performing throughout the day and well into the early hours.

It is a festival to show off the artistic and creative talents run through workshops with artists and school children, and enjoyed not only by the locals, but the many tourists who once they have been and enjoyed, return again year after year.



Some of the Lafrowda day models and sculptures made by local school children and community groups.

Work Programme

September	Weeding and watering of flower beds.
	Walk around St Just to see if there are any areas that need planting or new tubs.
October	Prune all shrubs and clear any Summer bedding.
	Plant tubs and beds for Winter and Spring. Weeding of all tubs and beds.
November	Compost all beds, plant shrubs and bulbs and carry out weeding.
December	Social events.
February	Bulb planting and discuss colour scheme for Summer planting and bedding.
March	Bedding plants from seed, weeding and tidying.
April	Agree route with Penwith District Council. Sort out bedding and plant out or add to any beds that need attention.
May	Start weeding official route. Preparatory to weed killing.
	Send out forms for town competitions. Judges selected.
June	Weed route. Agree official timetable for weed killing with Penwith Council.
July	Last minute tweaking, tidying and watering of plants.



Presentation and Awards St. Just In Bloom



2007- Presentation Evening- pictured are all of the Prize winners.

Each year a presentation and award evening is held for all those who received awards and prizes in the St. Just In Bloom competition. This is usually held at the end of the Summer and celebrates the great work that all those who entered have put into their gardens and flower displays throughout the year.



Richard Lawry of the St. Just In Bloom Group receiving his Award

Presentations 2007



Wendy Michelmore receiving her certificate at the 2007 Presentation Evening at the Commercial Hotel.

